



100

ANNIVERSARY

1925 - 2025



# CELEBRATING 100 YEARS OF EXCELLENCE

---

I am filled with immense pride and gratitude to celebrate Nautique Boat Company's 100th anniversary of crafting the best boats on the waters of the world. In 1925, Walter C. Meloon founded Florida Variety Boat Company with a passion for performance. Once re-named Correct Craft, the Meloon family turned this passion into a company that delivered Crafts to be enjoyed on the Waters of the World! In the decades that followed, the Nautique brand continued this legacy refining and delivering boats which have been a constant source of memories for generations of families.

Nautique continues to be driven by our passion for uncompromised craftsmanship and innovation, growing from a small family business to a globally recognized leader in the marine industry. Our commitment to this boatbuilding excellence has set us apart, and we have continually pushed the boundaries of what is possible on the water. Throughout the years, we have introduced groundbreaking models that have redefined watersports and we are excited to continue our pursuit of relentless innovation in the marine space for many years to come.

To mark our 100th anniversary, we have introduced our 2025 Centennial Edition Nautique Boats. These models represent the rich heritage of our company while incorporating the latest advancements that continue to make Nautique the brand of choice for boaters across the globe.

Thank you to our customers for being an integral part of the Nautique family. This incredible journey would not have been possible without the passion, support and loyalty of customers like you! As we celebrate the first 100 Years, we look forward to the next century ahead!

Warm Regards,

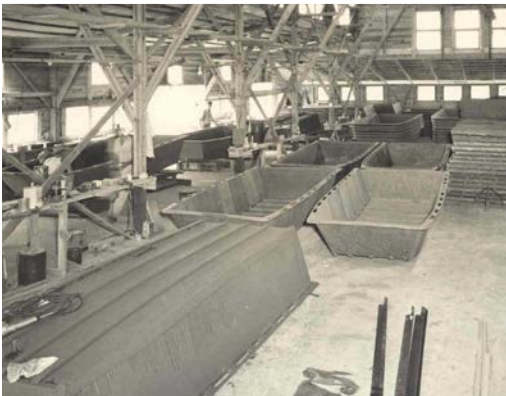


Greg Meloon  
President, Nautique Boat Company

*"This is the day that the LORD has made;  
let us rejoice and be glad in it."  
- Psalm 118:24*







This year marks the 100th anniversary of our company crafting the best boats on the waters of the world. As we embark on celebrating this monumental achievement, we're proud to share the rich history and story of how we got here.

From our modest beginnings as the Florida Variety Boat Company to the award-winning Correct Craft® and Nautique products that you know and love, we've been a part of countless world-class performances and family memories along the way. We're proud that our company has been woven into the fabric of the watersports world for a century in the making, and we've done so by pushing the industry forward and forging new ground in marine innovation.





There's more to see on our history page at [Nautique.com/History](https://www.nautique.com/History). Please visit the page or scan the QR code to enjoy this celebration of our journey.



# YOUR NAUTIQUE, OUR COMMITMENT

---

## 5-YEAR, 1k-HOUR WARRANTY

You get peace of mind when purchasing a new Nautique thanks to our 5-Year Transferable Warranty\*. Over the course of our 100-year history, we have built a reputation of creating trust and loyalty with our customers by always having their back. We want you to have the best ownership experience possible, that's why we go to great lengths to make certain you are enjoying your Nautique exactly the way it was designed.

\*Nautique warrants to the original owner or user, that each new 2025 Nautique boat, as originally manufactured by Nautique, shall under normal authorized use be free of defect in material and workmanship for a period of five (5) years or 1,000 hours from the date of delivery (whichever comes first). This warranty applies to factory-installed components including boat parts, options or other components not manufactured by Nautique Boat Company and is transferable one-time only to the second owner.







# PART OF A WINNING TEAM

---

## OWNERSHIP WITH ACCOLADES

Come be a part of Nautique's award-winning tradition and experience the feeling of ownership with honors. Each year, we are celebrated across the marine industry with accolades that continue to keep our customers happy. From being honored with awards in customer satisfaction and product innovation, we're leading the way in all aspects of our industry.





water industry  
**CSI**  
Customer Satisfaction Index  
*award*  
2023

**Excellence in Customer  
Satisfaction**

Inboard Watersports Boats

**NAUTIQUE BOAT  
COMPANY, INC.**

# FLIGHT CONTROL TOWERS®

---

## STYLE MEETS FUNCTION

Each model in our G-Series, S-Series and GS-Series comes standard with our Flight Control Tower® that provides the perfect tow point for wakeboarding or wakesurfing, and manually folds down for storage, easy travel, and navigating under bridges. Our Actuated Flight Control Tower is also available for these models, folding up or down at the touch of a button.

The Telescoping Flight Control Tower comes standard on our Paragons and is optional on the G-Series and S-Series. Easily telescope the tower up or down at the touch of a button with your crew sitting comfortably in their seats and the bimini remaining in place providing maximum protection from the elements.





**FLIGHT CONTROL TOWER**  
MANUAL

Available on:  
GS22 | GS20 | GS24



**FLIGHT CONTROL TOWER**  
ACTUATED

Available on:  
GS22 | GS20 | GS24



**FLIGHT CONTROL TOWER**  
MANUAL or ACTUATED

Available on:  
G25 | G23 | G21  
S25 | S23 | S21



**FLIGHT CONTROL TOWER**  
TELESCOPING

Available on:  
G25 | G23 | G21  
S25 | S23 | S21

# EXPERIENCE OUR ENDLESS WAVES

---

## NAUTIQUE SURF SYSTEM®

Found aboard all of our Super Air Nautique models, the Nautique Surf System (NSS) is our legendary technology that allows your boat to shape up long, perfectly formed surf waves for everyone to enjoy. Grab your friends and family and get ready to surf endless waves all summer long. With this groundbreaking innovation that allows our waves to be completely customizable, the NSS is ready to deliver the fun for surfers of all ages and skill-levels.





# HANDCRAFTED WITH THE HIGHEST-QUALITY MATERIALS

---

## BUILT TO LAST

At Nautique, we take great pride in our commitment to craftsmanship, sourcing and incorporating only the most durable, high-quality, and luxurious materials available so that your Nautique is built to last. Each Nautique is carefully constructed by hand with meticulous attention to detail, prioritizing quality at every stage of production. This dedication to quality is driven by a vision for Nautique Boats to withstand the test of time, ensuring that future generations can enjoy the same unforgettable experiences on the water that today's owners cherish.







# SUPER AIR NAUTIQUE | SERIES

G23 PARAGON, G25 PARAGON | G21, G23, G25 | S21, S23, S25 | GS20, GS22, GS24





## G23 PARAGON



### LENGTH WITH PLATFORM

25' 5" / 7.75 m

### LIFT RING SPACING

22' 5" / 6.83 m

### BEAM

102" / 2.59 m

### DRAFT

34" / .86 m

### APPROX DRY WEIGHT\*

7,750 lbs. / 3,515 kg

### FUEL CAPACITY

65.6 gal / 248.2 L

### MAXIMUM CAPACITY

16 people / 2,500 lbs. / 1,134 kg

### MAX BALLAST

3,700 lbs. / 1,678 kg

### HORSEPOWER

ZZ8S - 630 HP / 8LV 370  
- 370 HP (D)

### TORQUE

665 Ft-Lb / 595 Ft-Lb (D)

### GEAR REDUCTION RATIO

1.7:1

## G25 PARAGON



### LENGTH WITH PLATFORM

27' 5" / 8.61 m

### LIFT RING SPACING

24' 5" / 7.44 m

### BEAM

102" / 2.59 m

### DRAFT

34.5" / .88 m

### APPROX DRY WEIGHT\*

8,400 lbs. / 3,810 kg

### FUEL CAPACITY

88 gal / 333.1 L

### MAXIMUM CAPACITY

19 people / 2,800 lbs. / 1,270 kg

### MAX BALLAST

3,400 lbs. / 1,542 kg

### HORSEPOWER

ZZ8S - 630 HP / 8LV 370  
- 370 HP (D)

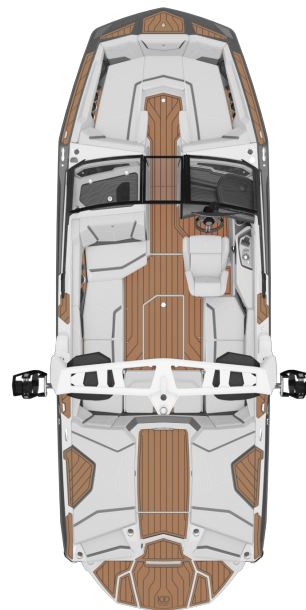
### TORQUE

665 Ft-Lb / 595 Ft-Lb (D)

### GEAR REDUCTION RATIO

1.7:1

## G21



### LENGTH WITH PLATFORM

23' 7" / 7.19 m

### LIFT RING SPACING

20' 6" / 6.25 m

### BEAM

102" / 2.59 m

### DRAFT

31.5" / .8 m

### APPROX DRY WEIGHT\*

5,900 lbs. / 2,676 kg

### FUEL CAPACITY

47 gal / 177.9 L

### MAXIMUM CAPACITY

14 people / 2,200 lbs. / 998 kg

### MAX BALLAST

2,650 lbs. / 1,202 kg

### HORSEPOWER

ZZ6 - 450 HP / ZZ8S - 630 HP / 8LV 370  
- 370 HP (D)

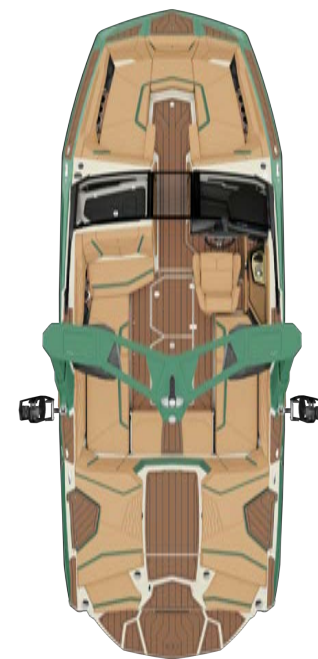
### TORQUE

465 Ft-Lb / 665 Ft-Lb / 595 Ft-Lb (D)

### GEAR REDUCTION RATIO

2.0:1 (ZZ6) / 1.7:1 (ZZ8S & D)

## G23



### LENGTH WITH PLATFORM

25' 5" / 7.75 m

### LIFT RING SPACING

22' 5" / 6.83 m

### BEAM

102" / 2.59 m

### DRAFT

31.25" / .79 m

### APPROX DRY WEIGHT\*

6,300 lbs. / 2,858 kg

### FUEL CAPACITY

65.6 gal / 248.2 L

### MAXIMUM CAPACITY

16 people / 2,500 lbs. / 1,134 kg

### MAX BALLAST

3,600 lbs. / 1,633 kg

### HORSEPOWER

ZZ6 - 450 HP / ZZ8S - 630 HP / 8LV 370 -  
370 HP (D)

### TORQUE

465 Ft-Lb / 665 Ft-Lb / 595 Ft-Lb (D)

### GEAR REDUCTION RATIO

2.0:1 (ZZ6) / 1.7:1 (ZZ8S & D)

## G25



### LENGTH WITH PLATFORM

27' 5" / 8.61 m

### LIFT RING SPACING

24' 5" / 7.44 m

### BEAM

102" / 2.59 m

### DRAFT

31.25" / .79 m

### APPROX DRY WEIGHT\*

6,600 lbs. / 2,994 kg

### FUEL CAPACITY

88 gal / 333.1 L

### MAXIMUM CAPACITY

19 people / 2,800 lbs. / 1,270 kg

### MAX BALLAST

3,600 lbs. / 1,633 kg

### HORSEPOWER

ZZ6 – 450 HP / ZZ8S – 630 HP / 8LV 370 – 370 HP (D)

### TORQUE

465 Ft-Lb / 665 Ft-Lb / 595 Ft-Lb (D)

### GEAR REDUCTION RATIO

2.0:1 (ZZ6) / 1.7:1 (ZZ8S & D)

## S21



### LENGTH WITH PLATFORM

23' 7" / 7.19 m

### LIFT RING SPACING

20' 4" / 6.2 m

### BEAM

100" / 2.54 m

### DRAFT

32" / .81 m

### APPROX DRY WEIGHT\*

5,200 lbs. / 2,359 kg

### FUEL CAPACITY

65.1 gal / 246.4 L

### MAXIMUM CAPACITY

14 people / 2,100 lbs. / 953 kg

### MAX BALLAST

2,650 lbs. / 1,202 kg

### HORSEPOWER

ZR4 – 400 HP / ZZ5 – 355 HP / ZZ6 – 450 HP / ZZ8R – 570 HP / 8LV 370 – 370 HP (D)

### TORQUE

400 Ft-Lb / 405 Ft-Lb / 465 Ft-Lb / 600 Ft-Lb / 595 Ft-Lb (D)

### GEAR REDUCTION RATIO

1.7:1 (ZZ6) / 1.5:1 (ZZ8R & D)

## S23



### LENGTH WITH PLATFORM

25' 2" / 7.67 m

### LIFT RING SPACING

21' 11.83" / 6.7 m

### BEAM

100" / 2.54 m

### DRAFT

31.25" / .79 m

### APPROX DRY WEIGHT\*

5,500 lbs. / 2,540 kg

### FUEL CAPACITY

65.1 gal / 246.4 L

### MAXIMUM CAPACITY

16 people / 2,300 lbs. / 1,043 kg

### MAX BALLAST

3,150 lbs. / 1,429 kg

### HORSEPOWER

ZZ5 – 355 HP / ZZ6 – 450 HP / ZZ8R – 570 HP / 8LV 370 – 370 HP (D)

### TORQUE

405 Ft-Lb / 465 Ft-Lb / 600 Ft-Lb / 595 Ft-Lb (D)

### GEAR REDUCTION RATIO

1.7:1 (ZZ6) / 1.5:1 (ZZ8R & D)

## S25



### LENGTH WITH PLATFORM

27' 2" / 8.28 m

### LIFT RING SPACING

24' 2" / 7.4 m

### BEAM

100" / 2.54 m

### DRAFT

32" / .81 m

### APPROX DRY WEIGHT\*

5,800 lbs. / 2,631 kg

### FUEL CAPACITY

85.8 gal / 324.8 L

### MAXIMUM CAPACITY

18 people / 2,700 lbs. / 1,225 kg

### MAX BALLAST

3,300 lbs. / 1,497 kg

### HORSEPOWER

ZZ6 – 450 HP / ZZ8R – 570 HP / 8LV 370 – 370 HP (D)

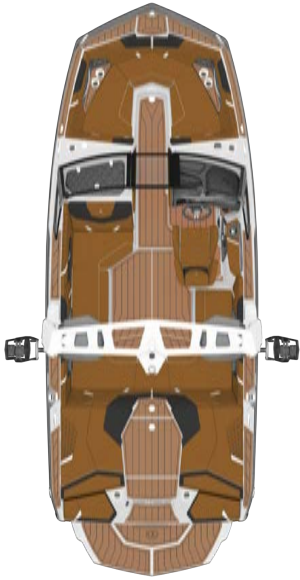
### TORQUE

465 Ft-Lb / 600 Ft-Lb / 595 Ft-Lb (D)

### GEAR REDUCTION RATIO

1.7:1 (ZZ6) / 1.5:1 (ZZ8R & D)

## GS20



**LENGTH WITH PLATFORM**  
22' 7" / 6.88 m

**LIFT RING SPACING**  
19' 1" / 5.82 m

**BEAM**  
100" / 2.54 m

**DRAFT**  
30" / .76 m

**APPROX DRY WEIGHT\***  
4,700 lbs. / 2,132 kg

**FUEL CAPACITY**  
39 gal / 147.6 L

**MAXIMUM CAPACITY**  
12 people / 1,850 lbs. / 839 kg

**MAX BALLAST**  
1,700 lbs. / 771 kg

**HORSEPOWER**  
ZR4 – 400 HP / ZZ5 – 355 HP /  
ZZ6 – 450 HP

**TORQUE**  
400 Ft-Lb / 405 Ft-Lb / 465 Ft-Lb

**GEAR REDUCTION RATIO**  
1.5:1

## GS22



**LENGTH WITH PLATFORM**  
24' 7" / 7.49 m

**LIFT RING SPACING**  
21' 1" / 6.43 m

**BEAM**  
100" / 2.54 m

**DRAFT**  
32" / .81 m

**APPROX DRY WEIGHT\***  
4,900 lbs. / 2,223 kg

**FUEL CAPACITY**  
59 gal / 223.3 L

**MAXIMUM CAPACITY**  
15 people / 2,200 lbs. / 998 kg

**MAX BALLAST**  
2,900 lbs. / 1,315 kg

**HORSEPOWER**  
ZR4 – 400 HP / ZZ5 – 355 HP / ZZ6 – 450 HP /  
ZZ8R – 570 HP

**TORQUE**  
400 Ft-Lb / 405 Ft-Lb / 465 Ft-Lb / 600 Ft-Lb

**GEAR REDUCTION RATIO**  
1.5:1

## GS24



**LENGTH WITH PLATFORM**  
26' 7" / 8.10 m

**LIFT RING SPACING**  
23' 1" / 7.04 m

**BEAM**  
100" / 2.54 m

**DRAFT**  
30" / .76 m

**APPROX DRY WEIGHT\***  
5,250 lbs. / 2,381 kg

**FUEL CAPACITY**  
76.7 gal / 290.3 L

**MAXIMUM CAPACITY**  
17 people / 2,650 lbs. / 1,202 kg

**MAX BALLAST**  
3,450 lbs. / 1,565 kg

**HORSEPOWER**  
ZZ5 - 355 HP / ZZ6 – 450 HP /  
ZZ8R – 570 HP

**TORQUE**  
405 Ft-Lb / 465 Ft-Lb / 600 Ft-Lb

**GEAR REDUCTION RATIO**  
1.7:1 (ZZ5 & ZZ6) / 1.5:1 (ZZ8R)



# SUPER AIR NAUTIQUE | G23 PARAGON





# SUPER AIR NAUTIQUE | G23 PARAGON

## PERFECTION ACHIEVED

The Super Air Nautique G23 Paragon is the most advanced wake sports boat on the market. Blending luxury and performance like never before, this revolutionary model combines a passion for refinement and elegance with the highest levels of innovation. Striking the perfect balance of comfort, modern styling and elegant lines, the G23 Paragon will exceed all your expectations. Whether you're looking for the perfect wakes or waves, this boat provides you with everything you've wanted in a luxury wake sports boat, as well as what you've come to expect from the coveted Paragon models.



Convertible Transom Seats



Board Management System



Helm Area with Dual LINC Panorays

**23' 3" / 7.09 m** - LENGTH OVERALL | **16** - MAX CAPACITY | **3,700 LBS / 1,678 kg** - MAX BALLAST







# SUPER AIR NAUTIQUE G23 PARAGON





## TECHNICAL SPECS

**LENGTH OVERALL**

23' 3" / 7.09 m

**LENGTH WITH PLATFORM**

25' 5" / 7.75 m

**LIFT RING SPACING**

22' 5" / 6.83 m

**BEAM**

102" / 2.59 m

**DRAFT**

34" / .86 m

**APPROX DRY WEIGHT\***

7,750 lbs. / 3,515 kg

**FUEL CAPACITY**

65.6 gal / 248.2 L

**MAXIMUM CAPACITY**

16 people / 2,500 lbs. / 1,134 kg

**MAX BALLAST (WITH SUPPLEMENTAL)**

3,700 lbs. / 1,678 kg

**HORSEPOWER**

ZZ8S - 630 HP / 8LV 370 - 370 HP (diesel)

**TORQUE**

665 Ft-Lb / 595 Ft-Lb (diesel)

**GEAR REDUCTION RATIO**

1.7:1

\*Dry weight represents a boat with standard factory equipment installed, minus fuel.





# SUPER AIR NAUTIQUE | G25 PARAGON





# SUPER AIR NAUTIQUE | G25 PARAGON

## THE NEXT ECHELON

Created from relentless innovation, the Super Air Nautique G25 Paragon has achieved the next echelon of luxury and performance. Our team of designers and engineers have crafted this 25-foot model to ensure that it stands as the most remarkable wake sports boat in its class. Through state-of-the-art technology and meticulous design selections, the G25 Paragon is aimed at enhancing your days on the water. From unparalleled quality to modern aesthetics, the G25 Paragon surpasses all the expectations.



Actuated Helm Seat



Telescoping Flight Control Tower

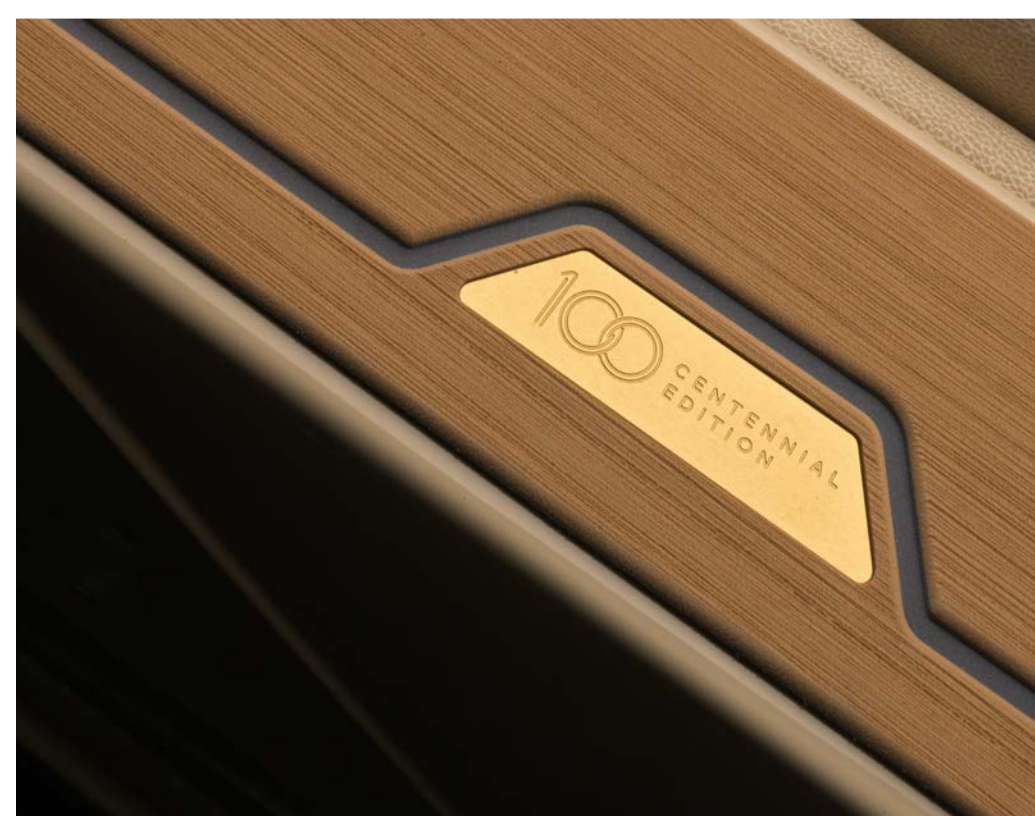


Convertible Transom Seats

**25' 3" / 7.70 m** - LENGTH OVERALL | **19** - MAX CAPACITY | **3,400 LBS / 1,542 kg** - MAX BALLAST







# SUPER AIR NAUTIQUE **G25 PARAGON**





## TECHNICAL SPECS

### LENGTH OVERALL

25' 3" / 7.70 m

### LENGTH WITH PLATFORM

27' 5" / 8.61 m

### LIFT RING SPACING

24' 5" / 7.44 m

### BEAM

102" / 2.59 m

### DRAFT

34.5" / .88 m

### APPROX DRY WEIGHT\*

8,400 lbs. / 3,810 kg

### FUEL CAPACITY

88 gal / 333.1 L

### MAXIMUM CAPACITY

19 people / 2,800 lbs. / 1,270 kg

### MAX BALLAST (WITH SUPPLEMENTAL)

3,400 lbs. / 1,542 kg

### HORSEPOWER

ZZ8S - 630 HP / 8LV 370 - 370 HP (diesel)

### TORQUE

665 Ft-Lb / 595 Ft-Lb (diesel)

### GEAR REDUCTION RATIO

1.7:1

\*Dry weight represents a boat with standard factory equipment installed, minus fuel.





# SUPER AIR NAUTIQUE | G21





# SUPER AIR NAUTIQUE | G21

## ICONIC LEGACY

Immerse yourself in the all-new Super Air Nautique G21. This high-performing wake boat encompasses the legendary lineage of the G-Series in a convenient 21-foot package. A spacious interior plays host to numerous configurations for an ultimate on water experience. With an all-new look, high-level performance and redesigned helm layout, the 2025 G21 is the most innovative 21-foot boat on the market.



Transom Seating



Reversible Stern Seat



Helm Command

**21' 5" / 6.52 m** - LENGTH OVERALL | **14** - MAX CAPACITY | **2,650 LBS / 1,202 kg** - MAX BALLAST







# SUPER AIR NAUTIQUE **G21**





## TECHNICAL SPECS

**LENGTH OVERALL**

21' 5" / 6.52 m

**LENGTH WITH PLATFORM**

23' 7" / 7.19 m

**LIFT RING SPACING**

20' 6" / 6.25 m

**BEAM**

102" / 2.59 m

**DRAFT**

31.5" / .8 m

**APPROX DRY WEIGHT\***

5,900 lbs. / 2,676 kg

**FUEL CAPACITY**

47 gal / 177.9 L

**MAXIMUM CAPACITY**

14 people / 2,200 lbs. / 998 kg

**MAX BALLAST (WITH SUPPLEMENTAL)**

2,650 lbs. / 1,202 kg

**HORSEPOWER**

ZZ6 - 450 HP / ZZ8S - 630 HP / 8LV 370 - 370 HP (diesel)

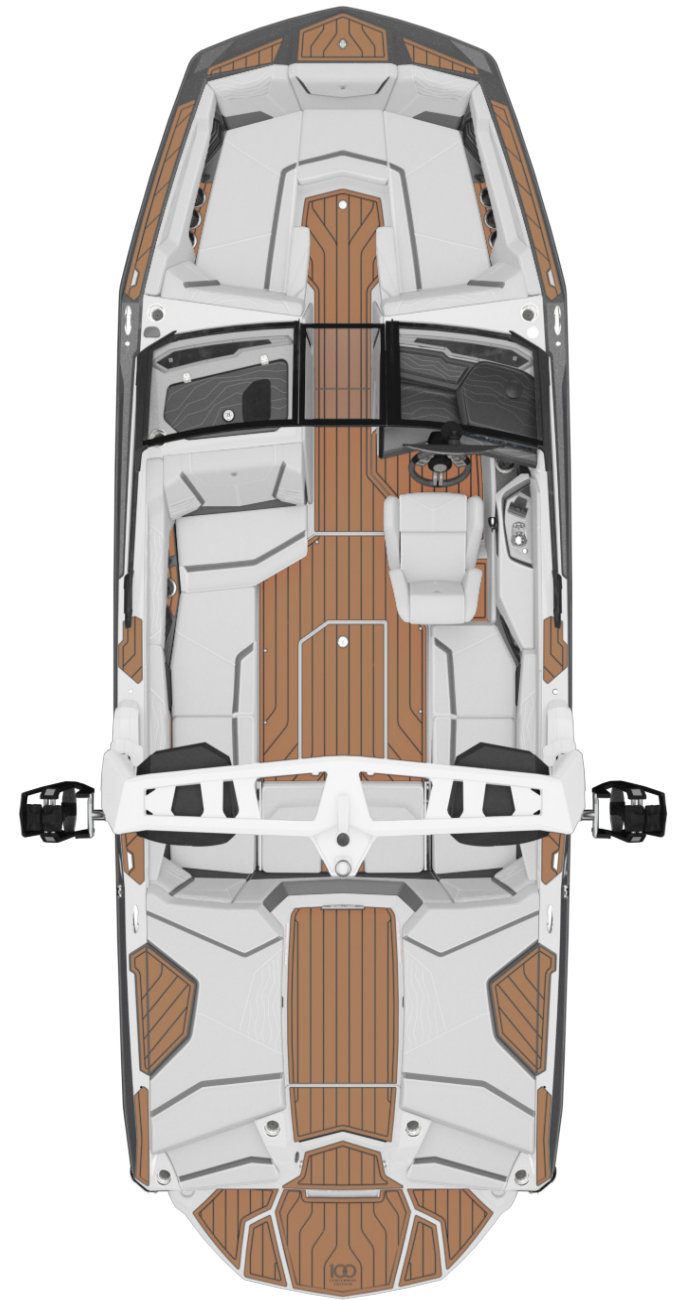
**TORQUE**

465 Ft-lb / 665 Ft-lb / 595 Ft-lb (diesel)

**GEAR REDUCTION RATIO**

2.0:1 (ZZ6) / 1.7:1 (ZZ8S and diesel)

\*Dry weight represents a boat with standard factory equipment installed, minus fuel.





# SUPER AIR NAUTIQUE | G23





# SUPER AIR NAUTIQUE | G23

## REDEFINING A LEGEND

After undergoing a complete redesign, the Super Air Nautique G23 is ready to redefine what it means to be the highest-performing wake boat on the market. The legend continues, with an all-new look and wakes and waves that will exceed your expectations. As the undisputed leader in the industry, come find out why the all-new G23 maintains its reputation as the number one choice for wakeboarders and wakesurfers of all ages and abilities.



Telescoping Flight Control Tower and Bimini with Surf Pockets



Helm Command



Transom Seating

**23' 3" / 7.09 m** - LENGTH OVERALL | **16** - MAX CAPACITY | **3,600 LBS / 1,633 kg** - MAX BALLAST







# SUPER AIR NAUTIQUE **G23**





## TECHNICAL SPECS

**LENGTH OVERALL**

23' 3" / 7.09 m

**LENGTH WITH PLATFORM**

25' 5" / 7.75 m

**LIFT RING SPACING**

22' 5" / 6.83 m

**BEAM**

102" / 2.59 m

**DRAFT**

31.25" / .79 m

**APPROX DRY WEIGHT\***

6,300 lbs. / 2,858 kg

**FUEL CAPACITY**

65.6 gal / 248.2 L

**MAXIMUM CAPACITY**

16 people / 2,500 lbs. / 1,134 kg

**MAX BALLAST (WITH SUPPLEMENTAL)**

3,600 lbs. / 1,633 kg

**HORSEPOWER**

ZZ6 - 450 HP / ZZ8S - 630 HP / 8LV 370 - 370 HP (diesel)

**TORQUE**

465 Ft-lb / 665 Ft-lb / 595 Ft-lb (diesel)

**GEAR REDUCTION RATIO**

2.0:1 (ZZ6) / 1.7:1 (ZZ8S and diesel)

\*Dry weight represents a boat with standard factory equipment installed, minus fuel.





# SUPER AIR NAUTIQUE | G25





# SUPER AIR NAUTIQUE | G25

## UNLEASH YOUR LIMITS

Be prepared to experience the legend of the G-Series with the all-new Super Air Nautique G25. With a large-scale lounge for spending time with family and friends or for watching all the action behind the boat, the completely redesigned G25 is ready to tackle the largest crews for summer. With a sleek new look, this beautifully crafted wake boat blends innovation and performance perfectly to provide lifelong memories for you and your crew.



Actuated Helm Seat



Nautique Surf System



Transom Seating

**25' 3" / 7.7 m** - LENGTH OVERALL | **19** - MAX CAPACITY | **3,600 LBS / 1,633 kg** - MAX BALLAST







# SUPER AIR NAUTIQUE **G25**





## TECHNICAL SPECS

**LENGTH OVERALL**

25' 3" / 7.7 m

**LENGTH WITH PLATFORM**

27' 5" / 8.61 m

**LIFT RING SPACING**

24' 5" / 7.44 m

**BEAM**

102" / 2.59 m

**DRAFT**

31.25" / .79 m

**APPROX DRY WEIGHT\***

6,600 lbs. / 2,994 kg

**FUEL CAPACITY**

88 gal / 333.1 L

**MAXIMUM CAPACITY**

19 people / 2,800 lbs. / 1,270 kg

**MAX BALLAST (WITH SUPPLEMENTAL)**

3,600 lbs. / 1,633 kg

**HORSEPOWER**

ZZ6 - 450 HP / ZZ8S - 630 HP / 8LV 370 - 370 HP (diesel)

**TORQUE**

465 Ft-lb / 665 Ft-lb / 595 Ft-lb (diesel)

**GEAR REDUCTION RATIO**

2.0:1 (ZZ6) / 1.7:1 (ZZ8S and diesel)

\*Dry weight represents a boat with standard factory equipment installed, minus fuel.





# SUPER AIR NAUTIQUE | S21





# SUPER AIR NAUTIQUE | S21

## WORLD-CLASS PEDIGREE

The 2025 Super Air Nautique S21 delivers relentless performance. A model that blends the heritage and innovation of the acclaimed S-Series, the S21 is the highest-performing wake boat in the 21-foot class. With an expansive and adaptable interior layout, the S21 is complemented by an ergonomically designed helm area featuring quality and meticulously planned design elements at every turn. From unparalleled performance to family fun on the water, the S21 is the ultimate wake sports boat and your ticket to an unforgettable summer.



Glovebox with Wireless Charging



Removable Table



Helm Seat

**21' 5" / 6.52 m** - LENGTH OVERALL | **14** - MAX CAPACITY | **2,650 LBS / 1,202 kg** - MAX BALLAST







# SUPER AIR NAUTIQUE S21





## TECHNICAL SPECS

### LENGTH OVERALL

21' 5" / 6.52 m

### LENGTH WITH PLATFORM

23' 7" / 7.19 m

### LIFT RING SPACING

20' 4" / 6.2 m

### BEAM

100" / 2.54 m

### DRAFT

32" / .81 m

### APPROX DRY WEIGHT\*

5,200 lbs. / 2,359 kg

### FUEL CAPACITY

65.1 gal / 246.4 L

### MAXIMUM CAPACITY

14 people / 2,100 lbs. / 953 kg

### MAX BALLAST (WITH SUPPLEMENTAL)

2,650 lbs. / 1,202 kg

### HORSEPOWER

ZR4 – 400 HP / ZZ5 – 355 HP / ZZ6 - 450 HP / ZZ8R – 570 HP / 8LV 370 – 370 HP (diesel)

### TORQUE

400 Ft-Lb / 405 Ft-Lb / 465 Ft-Lb / 600 Ft-Lb / 595 Ft-Lb (diesel)

### GEAR REDUCTION RATIO

1.7:1 (ZZ6) / 1.5:1 (diesel and ZZ8R)

\*Dry weight represents a boat with standard factory equipment installed, minus fuel.





# SUPER AIR NAUTIQUE | S23





# SUPER AIR NAUTIQUE | S23

## UNRIVALED CAPABILITY

Unleashing performance that remains unmatched in its class, the 2025 Super Air Nautique S23 is a cutting-edge wake boat with the modern, yet classic lines of a traditional bow Nautique. The S23 offers an array of tower and engine selections, and the performance can be customized to cater to every rider's needs and skill levels. A remarkable wake boat that serves as an exceptional platform for pushing your skills to new heights, the S23 is ready to bring you and your loved ones into a new era of style and performance.



Transom Storage



Transom Seating



Glovebox with Wireless Charging

**23' / 7.01 m** - LENGTH OVERALL | **16** - MAX CAPACITY | **3,150 LBS / 1,429 kg** - MAX BALLAST







# SUPER AIR NAUTIQUE S23





## TECHNICAL SPECS

**LENGTH OVERALL**

23' / 7.01 m

**LENGTH WITH PLATFORM**

25' 2" / 7.67 m

**LIFT RING SPACING**

21' 11.83" / 6.7 m

**BEAM**

100" / 2.54 m

**DRAFT**

31.25" / .79 m

**APPROX DRY WEIGHT\***

5,500 lbs. / 2,540 kg

**FUEL CAPACITY**

65.1 gal / 246.4 L

**MAXIMUM CAPACITY**

16 people / 2,300 lbs. / 1,043 kg

**MAX BALLAST (WITH SUPPLEMENTAL)**

3,150 lbs. / 1,429 kg

**HORSEPOWER**

ZZ5 - 355 HP / ZZ6 - 450 HP / ZZ8R - 570 HP /  
8LV 370 - 370 HP (diesel)

**TORQUE**

405 Ft-Lb / 465 Ft-Lb / 600 Ft-Lb / 595 Ft-Lb  
(diesel)

**GEAR REDUCTION RATIO**

1.7:1 (ZZ6) / 1.5:1 (diesel and ZZ8R)

\*Dry weight represents a boat with standard factory equipment installed, minus fuel.





# SUPER AIR NAUTIQUE | S25





# SUPER AIR NAUTIQUE | S25

## PUSHING THE BOUNDARIES

Created to accommodate larger crews, the 2025 Super Air Nautique S25 showcases performance and style in a 25-foot package. Redefining the boundaries of wake and wave performance, the S25 surpasses all expectations for your circle of friends and family. Offering a wide array of standard and optional features along with completely customized performance, the S25 is the perfect wake boat for all ages or skill levels. Positioning itself as an all-encompassing boat for the whole family, the S25 is made for those who want a traditional bow design, cutting-edge innovation and the modern look of the S-Series.



Love Seat Storage



LINC Panoray with Awareness Camera



Transom Seating

**25' / 7.62 m** - LENGTH OVERALL | **18** - MAX CAPACITY | **3,300 LBS / 1,497 kg** - MAX BALLAST







# SUPER AIR NAUTIQUE **S25**





## TECHNICAL SPECS

**LENGTH OVERALL**

25' / 7.62 m

**LENGTH WITH PLATFORM**

27' 2" / 8.28 m

**LIFT RING SPACING**

24' 2" / 7.4 m

**BEAM**

100" / 2.54 m

**DRAFT**

32" / .81 m

**APPROX DRY WEIGHT\***

5,800 lbs. / 2,631 kg

**FUEL CAPACITY**

85.8 gal / 324.8 L

**MAXIMUM CAPACITY**

18 people / 2,700 lbs. / 1,225 kg

**MAX BALLAST (WITH SUPPLEMENTAL)**

3,300 lbs. / 1,497 kg

**HORSEPOWER**

ZZ6 - 450 HP / ZZ8R - 570 HP / 8LV 370 - 370 HP (diesel)

**TORQUE**

465 Ft-Lb / 600 Ft-Lb / 595 Ft-Lb (diesel)

**GEAR REDUCTION RATIO**

1.7:1 (ZZ6) / 1.5:1 (diesel and ZZ8R)

\*Dry weight represents a boat with standard factory equipment installed, minus fuel.





# SUPER AIR NAUTIQUE | GS20





# SUPER AIR NAUTIQUE | GS20

## UNMATCHED VERSATILITY

Providing unmatched versatility for wakesurfing, wakeboarding, and waterskiing, the 2025 Super Air Nautique GS20 is setting the standard for the capabilities of a multi-sport towboat. Showcasing wakes and waves suitable for all activities, the GS20's hull incorporates inspiration from our record-breaking Ski Nautique and award-winning G-Series, guaranteeing an exceptional experience for the entire family. Combine this with the celebrated Nautique craftsmanship and reliability, and the 2025 GS20 refines what a versatile towboat can deliver.



Transom Storage



Bow Seating



Transom Seating

**20' / 6.10 m** - LENGTH OVERALL | **12** - MAX CAPACITY | **1,700 LBS / 771 kg** - MAX BALLAST







# SUPER AIR NAUTIQUE **GS20**





## TECHNICAL SPECS

**LENGTH OVERALL**

20' / 6.10 m

**LENGTH WITH PLATFORM**

22' 7" / 6.88 m

**LIFT RING SPACING**

19' 1" / 5.82 m

**BEAM**

100" / 2.54 m

**DRAFT**

30" / .76 m

**APPROX DRY WEIGHT\***

4,700 lbs. / 2,132 kg

**FUEL CAPACITY**

39 gal / 147.6 L

**MAXIMUM CAPACITY**

12 people / 1,850 lbs. / 839 kg

**MAX BALLAST**

1,700 lbs. / 771 kg

**HORSEPOWER**

ZR4 – 400 HP / ZZ5 – 355 HP / ZZ6 – 450 HP

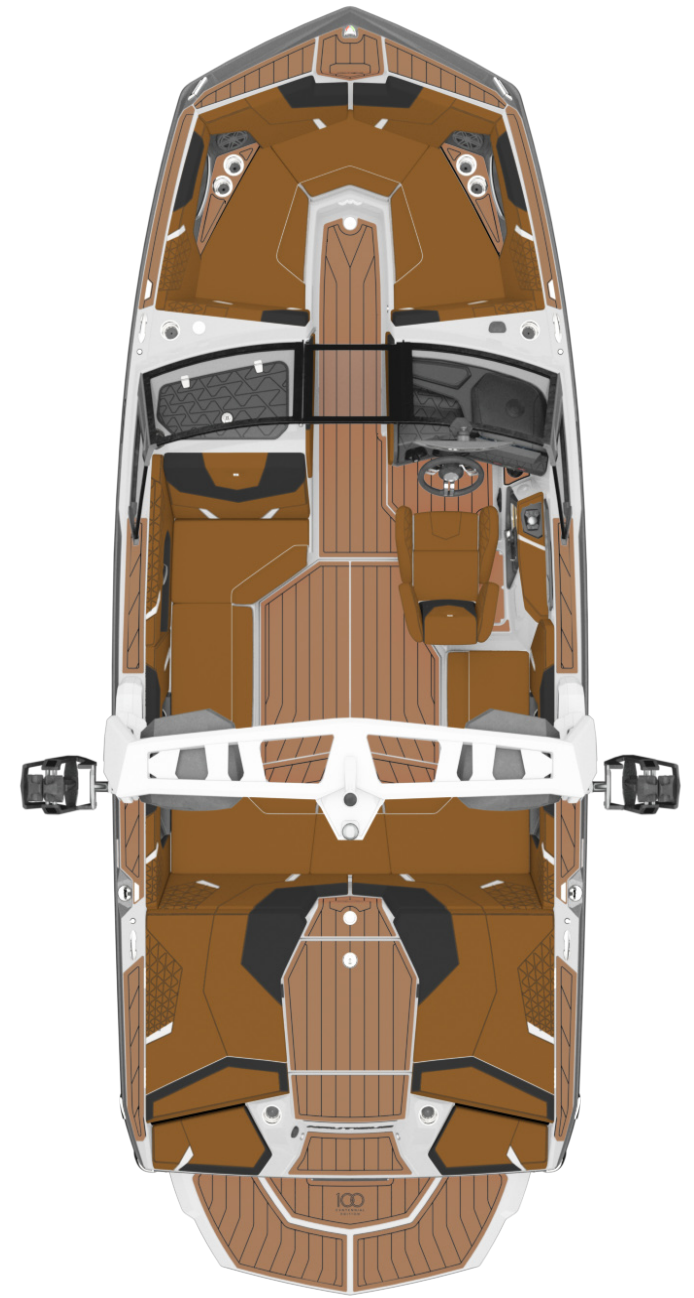
**TORQUE**

400 Ft-Lb / 405 Ft-Lb / 465 Ft-Lb

**GEAR REDUCTION RATIO**

1.5:1

\*Dry weight represents a boat with standard factory equipment installed, minus fuel.





# SUPER AIR NAUTIQUE | GS22





# SUPER AIR NAUTIQUE | GS22

## WORLD-CLASS PERFORMANCE

As one of the most celebrated models in the Nautique line, the 2025 GS22 finds the perfect balance of multi-sport performance. With inspiration derived from the record-setting Ski Nautique and award-winning G23, the GS22 can serve up unmatched performance for wakesurfing, wakeboarding and waterskiing. For the family that likes to do it all, the GS22 finds the sweet spot of versatility and delivers world-class quality and reliability you expect from a Nautique.



Reversible Stern Seat



Bow Seating



Bimini with Surf Pockets

**22' / 6.70 m** - LENGTH OVERALL | **15** - MAX CAPACITY | **2,900 LBS / 1,315 kg** - MAX BALLAST







# SUPER AIR NAUTIQUE GS22





## TECHNICAL SPECS

**LENGTH OVERALL**

22' / 6.70 m

**LENGTH WITH PLATFORM**

24' 7" / 7.49 m

**LIFT RING SPACING**

21' 1" / 6.43 m

**BEAM**

100" / 2.54 m

**DRAFT**

32" / .81 m

**APPROX DRY WEIGHT\***

4,900 lbs. / 2,223 kg

**FUEL CAPACITY**

59 gal / 223.3 L

**MAXIMUM CAPACITY**

15 people / 2,200 lbs. / 998 kg

**MAX BALLAST (WITH SUPPLEMENTAL)**

2,900 lbs. / 1,315 kg

**HORSEPOWER**

ZR4 – 400 HP / ZZ5 – 355 HP / ZZ6 – 450 HP / ZZ8R – 570 HP

**TORQUE**

400 Ft-Lb / 405 Ft-Lb / 465 Ft-Lb / 600 Ft-Lb

**GEAR REDUCTION RATIO**

1.5:1

\*Dry weight represents a boat with standard factory equipment installed, minus fuel.





GS24  
GARDEN STATE BOATWORKS

# SUPER AIR NAUTIQUE | GS24





# SUPER AIR NAUTIQUE | GS24

## TOP-TIER VERSATILITY

The 2025 Super Air Nautique GS24 is here to completely reimagine versatility in a 24-foot boat. Giving your family exceptional performance for wakesurfing, wakeboarding and waterskiing, the GS24 has world-class wakes and waves for every age and ability. With proven hull characteristics and Nautique dependability, this model is ready to satisfy the needs of everyone that comes onboard.



Transom Seating and Extended Sun Shade



Bimini with Surf Pockets

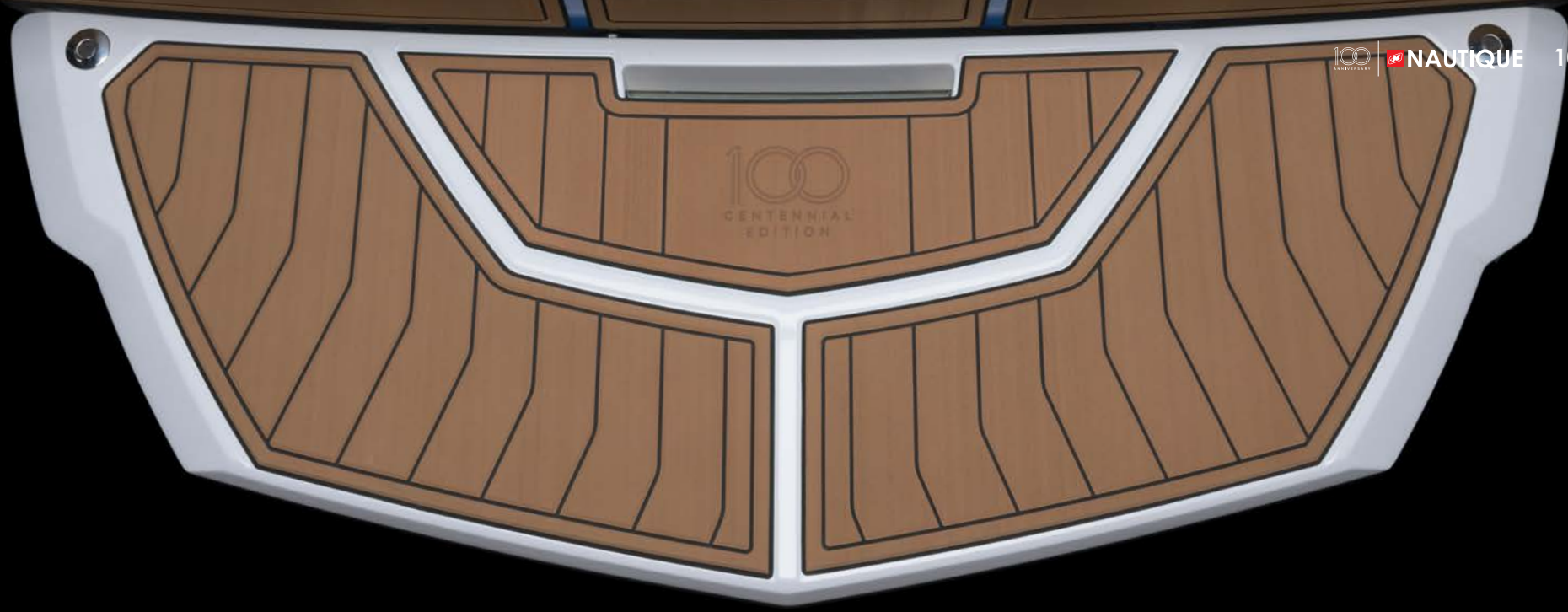


Glove Box with Wireless Charging

**24' / 7.32 m** - LENGTH OVERALL | **17** - MAX CAPACITY | **3,450 LBS / 1,565 kg** - MAX BALLAST







# SUPER AIR NAUTIQUE **GS24**





## TECHNICAL SPECS

**LENGTH OVERALL**

24' / 7.32 m

**LENGTH WITH PLATFORM**

26' 7" / 8.10 m

**LIFT RING SPACING**

23' 1" / 7.04 m

**BEAM**

100" / 2.54 m

**DRAFT**

30" / .76 m

**APPROX DRY WEIGHT\***

5,250 lbs. / 2,381 kg

**FUEL CAPACITY**

76.7 gal / 290.3 L

**MAXIMUM CAPACITY**

17 people / 2,650 lbs. / 1,202 kg

**MAX BALLAST (WITH SUPPLEMENTAL)**

3,450 lbs. / 1,565 kg

**HORSEPOWER**

ZZ5 - 355 HP / ZZ6 - 450 HP / ZZ8R - 570 HP

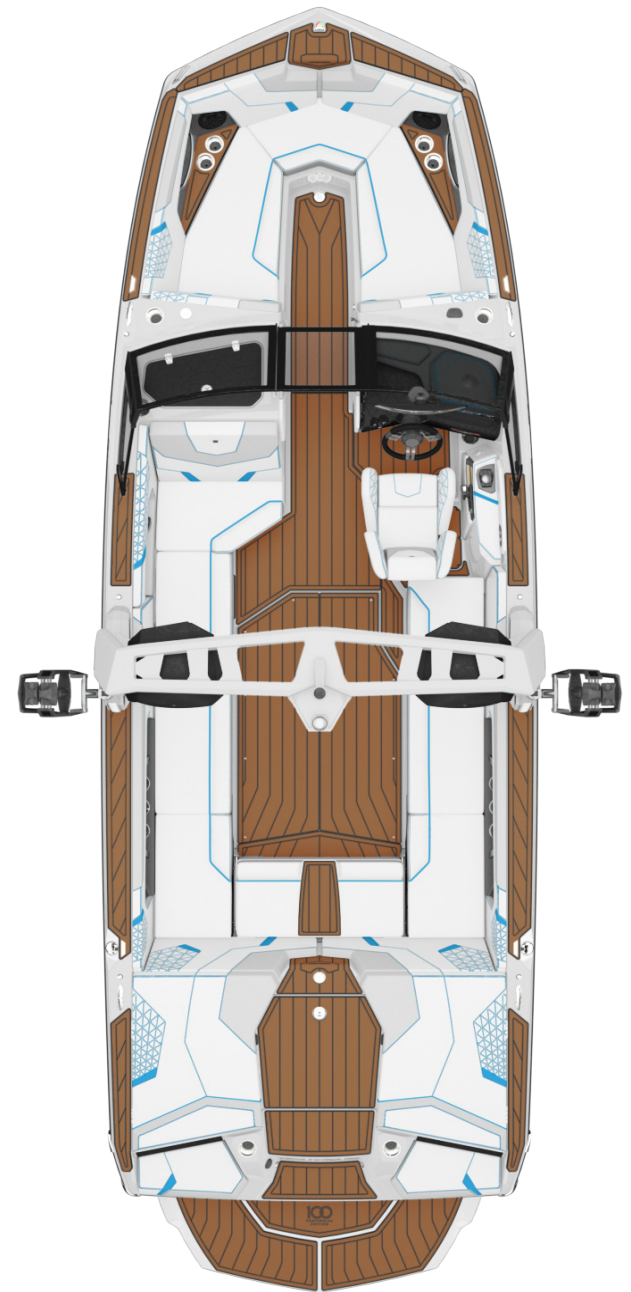
**TORQUE**

405 Ft-Lb / 465 Ft-Lb / 600 Ft-Lb

**GEAR REDUCTION RATIO**

1.7:1 (ZZ5 & ZZ6) / 1.5:1 (ZZ8R)

\*Dry weight represents a boat with standard factory equipment installed, minus fuel.



# SKI NAUTIQUE | SERIES

SKI NAUTIQUE | SKI NAUTIQUE 200









# SKI NAUTIQUE



# SKI NAUTIQUE

## FUEL YOUR PASSION

The Ski Nautique continues to be the highest performing waterski boat on the planet, with numerous world records and countless personal bests set behind this trailblazer. With a blended construction method that integrates carbon fiber with fiberglass, the Ski Nautique strikes the ideal balance between strength and weight. Featuring the patented MicroTuner® technology, the Ski Nautique is the iconic model that stands as the gateway to reaching your highest potential.



Bow Walk-Through



Ski Lockers



Integrated Zero Off®

**20' / 6.10 m** - LENGTH OVERALL | **7** - MAX CAPACITY | **400 LBS / 181.4 kg** - MAX BALLAST







# SKI NAUTIQUE





## TECHNICAL SPECS

### LENGTH OVERALL

20' / 6.10 m

### LENGTH WITH PLATFORM

21' 10.5" / 6.67 m

### LIFT RING SPACING

18' 7" / 5.66 m

### BEAM

98" / 2.49 m

### DRAFT

98" / 2.49 m

### APPROX DRY WEIGHT\*

2,945 lbs. / 1,336 kg

### FUEL CAPACITY

29 gal / 109.8 L

### MAXIMUM CAPACITY

7 people / 1,450 lbs. / 658 kg

### MAX BALLAST (WITH SUPPLEMENTAL)

400 lbs. / 181.4 kg

### HORSEPOWER

ZZ6 – 450 HP

### TORQUE

465 Ft-Lb

### GEAR REDUCTION RATIO

1.23:1

\*Dry weight represents a boat with standard factory equipment installed, minus fuel.







SK

# SKI NAUTIQUE | 200



# SKI NAUTIQUE | 200

## TIME-TESTED PERFORMANCE

The Ski Nautique 200 personifies the conventional bow waterski boat. With classic lines, it appeals to the Nautique purist and is built as a performance-oriented model with the track record to back it up. This boat generates soft wakes suitable for waterskiers of all ages and skill levels, and the open interior design will cater towards watersports lovers of all kinds.



Open Bow



Love Seat Storage



Driver Visibility

**20' / 6.10 m** - LENGTH OVERALL | **9** - MAX CAPACITY | **N/A** - MAX BALLAST





100  
CENTENNIAL  
EDITION



# SKI NAUTIQUE | 200





## TECHNICAL SPECS

### LENGTH OVERALL

20' / 6.10 m

### LENGTH WITH PLATFORM

21' 10" / 6.65 m

### LIFT RING SPACING

18' 8" / 5.69 m

### BEAM

95" / 2.4 m

### DRAFT

22" / .56 m

### APPROX DRY WEIGHT\*

3,175 lbs. / 1,440 kg

### FUEL CAPACITY

27 gal / 102.1 L

### MAXIMUM CAPACITY

9 people / 1,450 lbs. / 658 kg

### MAX BALLAST (WITH SUPPLEMENTAL)

N/A

### HORSEPOWER

ZZ4 - 400 HP / ZZ5 - 355 HP / ZZ6 - 450 HP

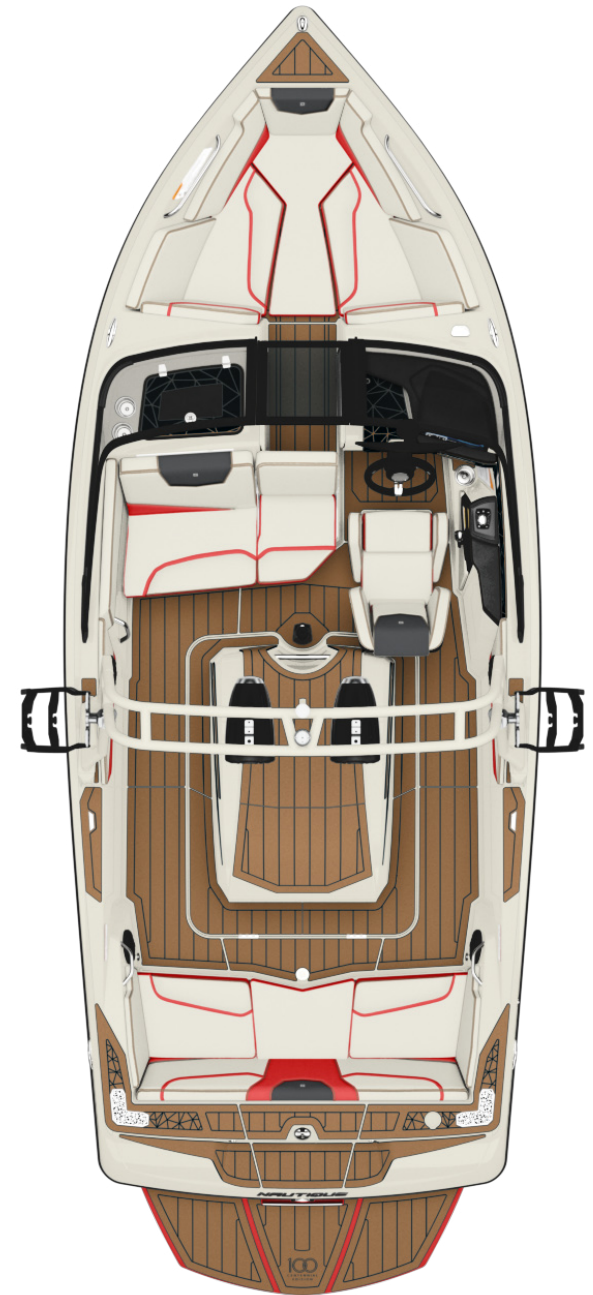
### TORQUE

400 Ft-Lb / 405 Ft-Lb / 465 Ft-Lb

### GEAR REDUCTION RATIO

1.23:1

\*Dry weight represents a boat with standard factory equipment installed, minus fuel.





# THE ULTIMATE SOUND EXPERIENCE

---

## JL AUDIO®

Our partnership with JL Audio allows us to provide the best possible sound experience on all of our Nautique models. Each boat is calibrated with engineers from both the Nautique and JL Audio teams to create the optimal scenario. Each component of our comprehensive JL Audio stereo system is designed to perform seamlessly with one another to deliver the highest results. The JL Audio MM105 head unit delivers crisp and clear sound to the JL Audio speakers onboard, all of which are powered by JL Audio amplifiers. With great standard packages, there are also upgraded options, depending on the boat model, that can include JL Audio subwoofers, tower speakers, additional zone control and our exclusive JL WaveFront™ and WakeSub™ technology.





# THE NEXT GENERATION OF PERFORMANCE

---

## POWER AND RELIABILITY

At Nautique, we take pride in offering our customers the most powerful and reliable engine options available on the market. With our industry-leading gas engine offerings from our sister company, Pleasurecraft® Marine Engines (PCM), every Nautique can provide you with outstanding performance day in and day out. If you're interested in a diesel option on select Nautique models, we're also proud to have the powerful Yanmar Marine 8LV available. When it comes time to choose your Nautique, you'll have peace of mind knowing you have the best possible selections available to you.





**PCM ZZ8R** – The PCM® ZZ8R is a remarkable engine offering that takes advantage of General Motors' most powerful base engine ever created for production. PCM skillfully utilizes this immense power while incorporating all the renowned features that have made PCM famous. The ZZ8R was built from the ground up with cutting-edge direct-injection and supercharged technology, providing unmatched efficiency and power compared to its counterparts. With an ability accommodate 89 Octane Fuel, the ZZ8R stands as one of the marine industry's most advanced gasoline engines.

**HP: 570 / Displacement: 376 c.i.d. (6.2L) / Torque: 600 Ft-Lb**

**PCM ZZ8S** – We are proud to offer the brand-new PCM® ZZ8S, a groundbreaking powerplant built upon General Motors' most formidable base engine ever developed for production. After a complete redesign, PCM channels raw power delivering an industry-leading 630 horsepower and 665 Ft-Lb of torque. With the utilization of cutting-edge innovation that includes direct-injection and supercharged technology, the ZZ8S also has the ability to accommodate 89 Octane fuel and is comprised of a remarkable blend of efficiency and power.

**HP: 630 / Displacement: 6.2L (376 c.i.d.) / Torque: 665 Ft-Lb**

**PCM ZZ6** – Incorporating the latest in General Motors direct-injection technology, along with the latest in PCM design, the ZZ6 has the performance and fuel efficiency that watersports enthusiasts desire.

**HP: 450 / Displacement: 376 c.i.d. (6.2L) / Torque: 465 Ft-Lb**

**PCM ZZ5** – Incorporating the latest in General Motors direct-injection technology, along with the latest in PCM design, the ZZ5 has the power and fuel efficiency for a great day on the water.

**HP: 355 / Displacement: 325 c.i.d. (5.3L) / Torque: 405 Ft-Lb**

**PCM ZR4** – The PCM ZR4 is a proven engine with over a decade of outstanding performance. Upgraded with the Gen 2 CXS exhaust system as well as 100% closed cooling, the ZR4 is stronger than ever.

**HP: 400 / Displacement: 364 c.i.d. (6.0L) / Torque: 400 Ft-Lb**



---

**YANMAR / DIESEL PROPULSION**

**8LV** – We're proud to offer a Yanmar diesel option for our G-Series, S-Series and Paragon models. With high torque output and an incredible power-to-weight ratio, this turbo-charged diesel engine provides a more fuel-efficient option for those looking to keep their RPM's low when fully loaded.

**HP: 370 / Displacement: 272 c.i.d. (4.5L) / Torque: 595 Ft-Lb**

# DESIGNED FOR COASTAL ADVENTURES

G25P | G23P | G25 | G23 | G21 | S25 | S23 | S21 | GS24 | GS22 | GS20

---

## NAUTIQUE COASTAL EDITION

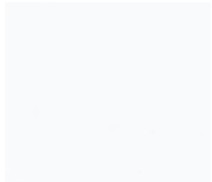
The Nautique Coastal Edition was made for salt-water days. If you spend your time on the water by the coast, then you know the value of products built to last. Nautique Coastal Editions are made with corrosion-resistant features throughout the boat that protect vital parts from the abuse of saltwater. Whether you spend your days in a tropical paradise or an intra-coastal waterway, the Nautique Coastal Edition ensures your boat stands the test of time.



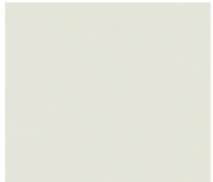


# INTERIOR COLORS

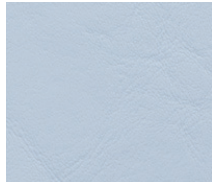
---



MYSTIC WHITE



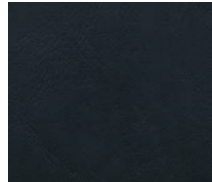
LUNAR WHITE



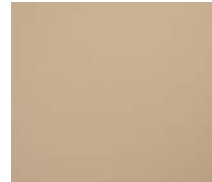
HAZE GREY



TUNGSTEN GREY



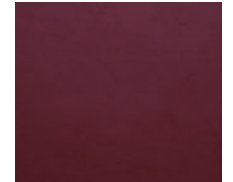
JET BLACK



SAHARA SAND



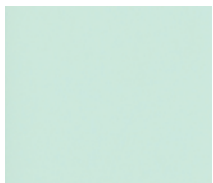
MOJAVE BROWN



CRIMSON RED



VICTORY RED



CAPTIVA GREEN



TETON GREEN



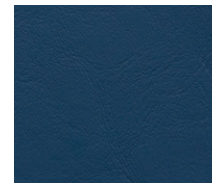
STEEL BLUE



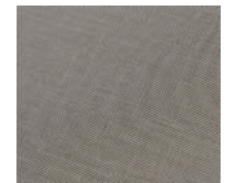
REEF BLUE



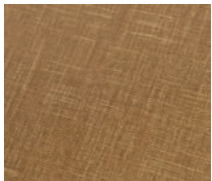
MASTERS BLUE



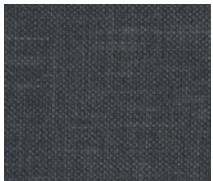
ADMIRAL BLUE



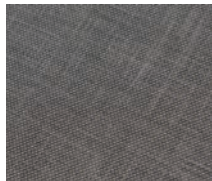
HAZE GREY  
TRUEWEAVE



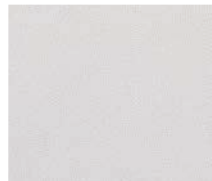
MOJAVE BROWN  
TRUEWEAVE



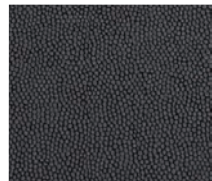
JET BLACK  
TRUEWEAVE



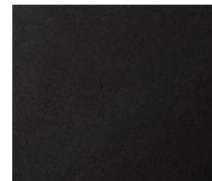
TUNGSTEN GREY  
TRUEWEAVE



MYSTIC WHITE  
SOFTMAX

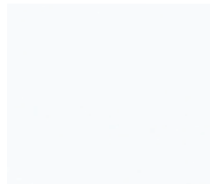


ANTHRACITE  
SOFTMAX

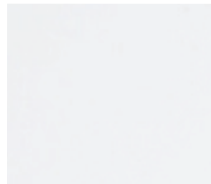


JET BLACK  
SOFTMAX

# EXTERIOR COLORS



MYSTIC WHITE



LUNAR WHITE



HAZE GREY



TUNGSTEN GREY



JET BLACK



VICTORY RED



SAHARA SAND



TETON GREEN



STEEL BLUE



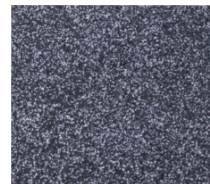
REEF BLUE



MASTERS BLUE



ADMIRAL BLUE



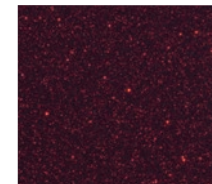
ANTHRACITE  
METAL FLAKE



JET BLACK  
METAL FLAKE



MEDALLION  
METAL FLAKE



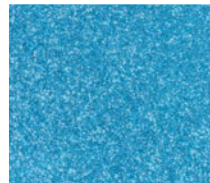
CRIMSON RED  
METAL FLAKE



VICTORY RED  
METAL FLAKE



STEEL BLUE  
METAL FLAKE



REEF BLUE  
METAL FLAKE



MASTERS BLUE  
METAL FLAKE



ADMIRAL BLUE  
METAL FLAKE



CENTENNIAL BLACK  
METAL FLAKE







 **NAUTIQUE**  
NAUTIQUE.COM SURFING • RIDING • SKIING

Nautique Boat Company, Inc.  
14700 Aerospace Parkway • Orlando, Florida 32832 USA  
800-346-2092 • 407-855-4141  
[nautique.com](http://nautique.com)

Follow us at:    