



NAUTIQUE

WHERE LUXURY MEETS PERFORMANCE



2027 S - Series | S25 | S23



Timeless and Progressive



The all-new 23-foot S23 and 25-foot S25 are a confident statement of intent – crafted to deliver the most complete Nautique experience. Guided by a philosophy that is unmistakably made for more, the S-Series unites heritage and innovation in a way that feels both timeless and progressive. Every element has been thoughtfully refined to offer greater capability, elevated comfort, heightened craftsmanship, and more opportunity on the water. The result is a series that never asks you to compromise, while seamlessly delivering performance, luxury, versatility, and design in perfect balance.

From an entirely new hull design engineered to produce crisp, consistent wakes and the most versatile, high-performance surf wave to date, to an interior designed with elevated comfort, intuitive functionality, and expanded storage space, the S-Series adapts seamlessly to every kind of day on the water. It creates room for beginners to build confidence, for experienced riders to push further, and for everyone on board to feel completely at home.

The S-Series is not defined by a single strength, but by how seamlessly it brings them all together. More memories. More connection. More time spent doing what you love.



SUPER AIR NAUTIQUE

AIR NAUTIQUE



25





MER AIR NAUTIQUE

S²⁵ | Super Air Nautique S25

Uncompromising Capability

Timeless in presence and intentional in design, the completely redesigned S25 balances elegance with performance in perfect harmony. Its exterior speaks in a clean, modern language shaped by Nautique heritage, while the interior surrounds passengers with premium materials and carefully considered comfort. Designed with more storage than ever before and a spacious layout that welcomes a large crew, the S25 ensures everyone and everything has its place on board.

Versatile by design and uncompromising by nature, the S25 stands as a new benchmark - crafted for today, inspired by the past, and delivering the foundation for exceptional wakeboarding and wakesurfing capability, providing the most complete expression of the Nautique family experience.



Manual Swim Terrace



Helm



In-Floor Cooler

















WW
SUPER AIR NAUTIQUE





25



SPECIFICATIONS

LENGTH OVERALL
25' / 7.62 m

LENGTH WITH PLATFORM
27' 2" / 8.28 m

BEAM
102" / 2.59 m

DRAFT
30" / .76 m

APPROX BASE DRY WEIGHT
5,800 lbs. / 2,630 kg

FUEL CAPACITY
78.7 gal / 297.9 L

MAXIMUM CAPACITY
18 people / 2,700 lbs. / 1,225 kg

MAX BALLAST
3,900 lbs. / 1,769 kg

HORSEPOWER
ZZ6 - 450 HP / ZZ8S - 630 HP /
8LV 370 - 370 HP (D)

TORQUE
465 Ft-Lb / 665 Ft-Lb / 595 Ft-Lb (D)

GEAR REDUCTION RATIO
2.0:1 / 1.7:1 / 1.7:1 (D)



SUPER AIR NAUTIQUE S25



S

23





SUPER AIR NAUTIQUE

S²³ | **Super Air Nautique S23**

Undeniably Nautique

The completely redesigned S23 carries an immediate sense of presence - an unmistakable blend of Nautique's storied heritage and modern expression of design. From every angle, its bold yet timeless character feels intentional, where elegant simplicity meets purposeful detail. The thoughtfully curated interior mirrors that same design language, with elevated, intuitive creature comforts and expanded storage solutions. The newly developed hull delivers unprecedented versatility in wake and wave performance, equally at home teaching beginners as it is advancing seasoned progression. It's a modern take on a classic, refined to its essence, and designed to deliver a complete, uncompromising on-water experience that feels distinctly, and undeniably, Nautique.



Steering Assist Throttle Control



Helm



Rear Storage





NAUTIQUE

















23



SPECIFICATIONS

LENGTH OVERALL
23' / 7.01 m

LENGTH WITH PLATFORM
25' 2" / 7.67 m

BEAM
102" / 2.59 m

DRAFT
30" / .76 m

APPROX BASE DRY WEIGHT
5,700 lbs. / 2,585 kg

FUEL CAPACITY
60.8 gal / 230.2 L

MAXIMUM CAPACITY
16 people / 2,300 lbs. / 1,043 kg

MAX BALLAST
3,500 lbs. / 1,588 kg

HORSEPOWER
ZZ6 - 450 HP / ZZ8S - 630 HP /
8LV 370 - 370 HP (D)

TORQUE
465 Ft-Lb / 665 Ft-Lb / 595 Ft-Lb (D)

GEAR REDUCTION RATIO
2.0:1 / 1.7:1 / 1.7:1 (D)



SUPER AIR NAUTIQUE S23



INTERIOR VINYL COLORS



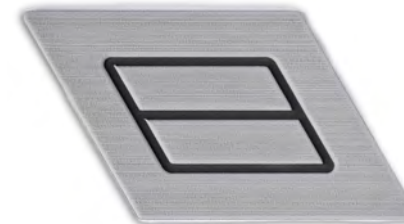
INTERIOR VINYL COLORS



NON-SKID COLORS

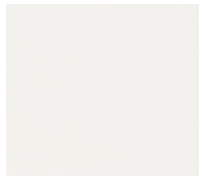


MOCHA BROWN

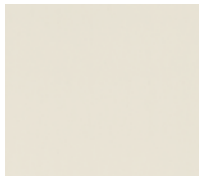


TITANIUM BLACK

EXTERIOR GELCOAT COLORS



MYSTIC WHITE



LUNAR WHITE



HAZE GREY



TUNGSTEN GREY



JET BLACK



SAHARA SAND



VICTORY RED



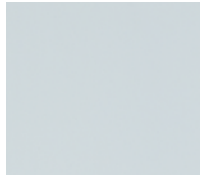
CANYON RED



CAPTIVA GREEN



TETON GREEN



STEEL BLUE



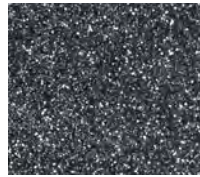
CANAVERAL BLUE



MASTERS BLUE



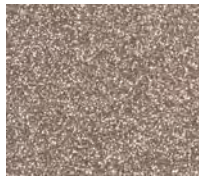
MARINER BLUE



ANTHRACITE
METAL FLAKE



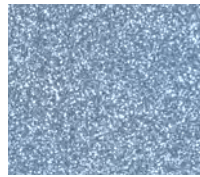
JET BLACK
METAL FLAKE



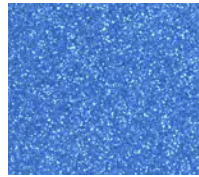
MEDALLION
METAL FLAKE



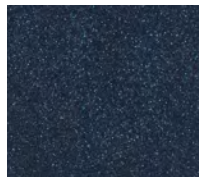
VICTORY RED
METAL FLAKE



CANAVERAL BLUE
METAL FLAKE



MASTERS BLUE
METAL FLAKE



MARINER BLUE
METAL FLAKE





©2026 Nautique Boat Company, Inc. | nautique.com | 14700 Aerospace Parkway • Orlando, FL USA 32832 | 1-800-346-2092

Follow us at:



@nautiqueboats